



MARTE Mk2/N is a direct derivative of the proven and in service MARTE Mk2/S helicopter-launched anti-ship weapon system, both variants deploying the same MARTE Mk2 missile.

The MARTE Mk2 missile, with an effective range in excess of 30 km, is a fire and forget, all weather sea skimming missile with inertial mid-course navigation through way points and active radar terminal homing. The Mk2/N system incorporates a mission planning function to optimise operation.

MARTE Mk2/N fits very neatly into the spectrum of naval anti-ship weapon systems: medium calibre guns for short range, MARTE Mk2/N for medium range operations lying within the detection capacity of the ship's own sensors and MBDA's OTOMAT/TESEO or EXOCET MM40 Block 3 for long range. With no need for supporting airborne detection and unlike a helicopter with anti-ship weapons, a vessel armed with MARTE Mk2/N can stay on-station for extended periods.

Launcher Options

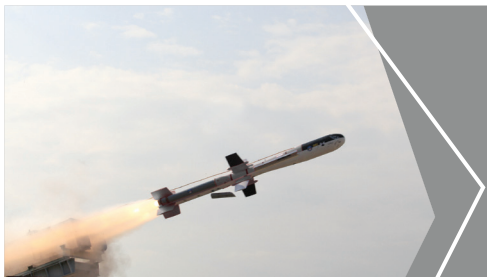
With the availability of various launcher configurations, MARTE Mk2/N is suitable for installation and integration, either as a new build or retro-fit, on a wide range of naval vessels from 25 to 50 m. Options range from two single or double launchers for a small patrol craft up to quadruple launchers for larger vessels.

- Latest generation, horizon range lightweight anti-ship missile system
- Fire and Forget
- Comprehensive mission planning
- Easy installation, new build or retro-fit
- Suitable for a wide range of vessels
- Ideal for littoral operations

MARTE MK2/N

MEDIUM RANGE, LIGHTWEIGHT
ANTI-SHIP MISSILE SYSTEM

MBDA
MISSILE SYSTEMS



SEA

MBDA Contacts
 Sales and Business Development
 1 avenue Réaumur
 92358 Le Plessis-Robinson cedex - France
 Tel. + 33 (0) 1 71 54 10 00
 Fax + 33 (0) 1 71 54 00 01
 salesenquiries@mbda-systems.com
 www.mbda-systems.com

Warhead & Fuze

- Semi-piercing HE warhead
- Impact and proximity fuze

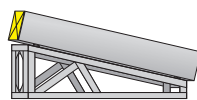
MARTE Mk2/N Launcher Configurations

Different, modular launcher configurations may be selected in line with available deck space thereby permitting installation on a wide range of naval platforms. A single launcher can easily be upgraded to a stacked twin whilst a flat twin launcher can be upgraded to a quad. In each case firepower is doubled even though the deck footprint is unchanged.

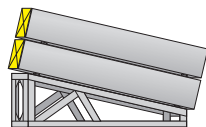


Fire Control System

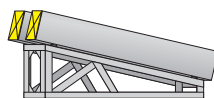
The lightweight fire control system (combined weight, 21 kg) utilises the same helicopter-proven MMCU (MARTE Missile Control Unit) and MIU (Missile Interface Unit) units as MARTE Mk2/S. The MMCU can be linked to an onboard display on which all the mission planning functions can be performed.



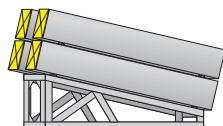
Single Launcher



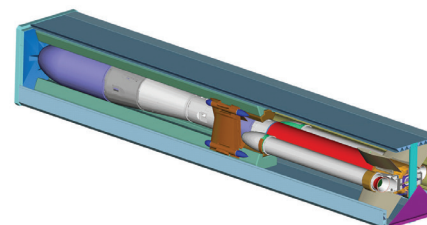
Stacked Twin Launcher



Flat Twin Launcher



Quad Launcher



MARTE Mk2/N Mission Planning

Name

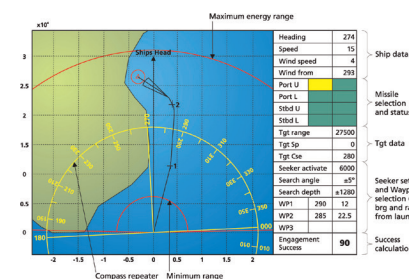
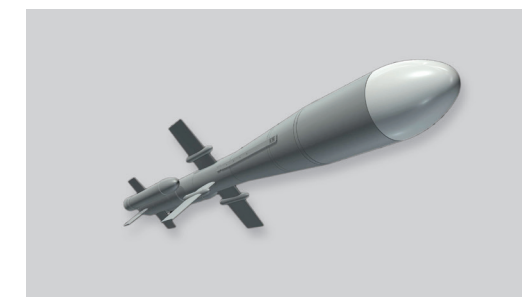
- MARTE MK2/N

Missile characteristics

- Weight: 310 kg
- Length: 3.85 m (canister 4 m)
- Max Body Diameter: 316 mm
- Range: In excess of 30 km

Installation capability (includes below decks fire control)

- 2 x single launchers: 1,500 kg
- 2 x twin launchers: 3,000 kg
- 2 x quad launchers: 5,400 kg



MFC console for Mission Planning of MARTE Mk2/N