



## MARTE MK2/N

### LIGHTWEIGHT, MEDIUM RANGE ANTI-SHIP WEAPON SYSTEM

The horizon-range Marte MK2/N is a direct derivative of the proven and in-service Marte MK2/S helicopter-launched anti-ship weapon. This fire-and-forget, all-weather sea-skimming missile uses inertial mid-course navigation through way-points and active-radar terminal homing in carrying out its attack.

#### Warhead and fuze

- Semi-piercing HE warhead
- Impact and proximity fuzes



#### Marte MK2/N launcher configurations

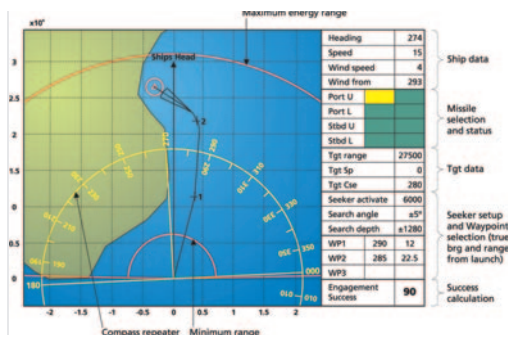
Different, modular launcher configurations may be selected in line with available deck space thereby permitting installation on a wide range of naval platforms. A single launcher can easily be upgraded to a stacked twin. In each case firepower is doubled even though the deck footprint remains unchanged.

#### Fire control system

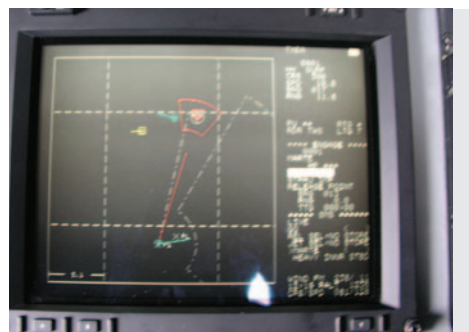
The lightweight fire control system (combined weight: 21kg) utilises the same helicopter-proven MMCU (Marte Missile Control Unit) and MIU (Missile Interface Unit) units as Marte MK2/S.

#### Operational advantages

- Capable of dealing with a wide range of surface targets with high efficiency and cost effectiveness
- Ideal for use in littoral warfare and against late-detected targets
- Easy to operate with a quick reaction time
- Fire-and-forget allowing the operator to select another target or move to safety
- All-weather, night and day
- The same missile can be operated from air and surface platforms (high level of operational flexibility)



Marte MK2/N Mission Planning



MFC console for Mission Planning of Marte MK2/N



Single Launcher



Stacked Twin Launcher



Flat Twin Launcher



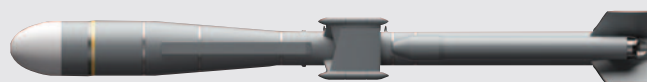
Quad Launcher

## Features

- Fire-and-forget
- Comprehensive mission planning
- Easy installation, new build or retro-fit
- Suitable for a wide range of vessels
- Ideal for littoral operations

## Missile characteristics

**Weight:** 310kg  
**Length:** 3.85m (canister 4m)  
**Max. diameter:** 316mm  
**Range:** In excess of 30km  
**Speed:** High subsonic



## Installation capability (includes below deck fire control)

2 x single launchers: 1,500kg

