



MARTE Mk2/N is a direct derivative of the proven and in service MARTE Mk2/S helicopter-launched anti-ship weapon system, both variants deploying the same MARTE Mk2 missile.

The MARTE Mk2 missile, with an effective range in excess of 30 km, is a fire and forget, all weather sea skimming missile with inertial mid-course navigation through way points and active radar terminal homing. The Mk2/N system incorporates a mission planning function to optimise operation.

MARTE Mk2/N fits very neatly into the spectrum of naval anti-ship weapon systems: medium calibre guns for short range, MARTE Mk2/N for medium range operations lying within the detection capacity of the ship's own sensors and MBDA's OTOMAT/TESEO or EXOCET MM40 Block 3 for long range. With no need for supporting airborne detection and unlike a helicopter with anti-ship weapons, a vessel armed with MARTE Mk2/N can stay on-station for extended periods.

Launcher Options

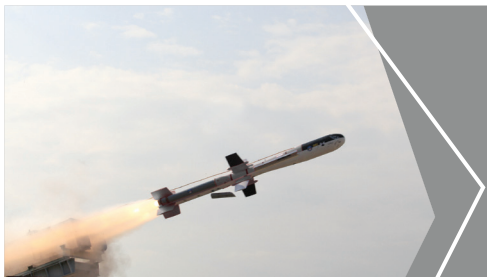
With the availability of various launcher configurations, MARTE Mk2/N is suitable for installation and integration, either as a new build or retro-fit, on a wide range of naval vessels from 25 to 50 m. Options range from two single or double launchers for a small patrol craft up to quadruple launchers for larger vessels.

- Latest generation, horizon range lightweight anti-ship missile system
- Fire and Forget
- Comprehensive mission planning
- Easy installation, new build or retro-fit
- Suitable for a wide range of vessels
- Ideal for littoral operations

MARTE MK2/N

MEDIUM RANGE, LIGHTWEIGHT
ANTI-SHIP MISSILE SYSTEM

MBDA
MISSILE SYSTEMS



SEA

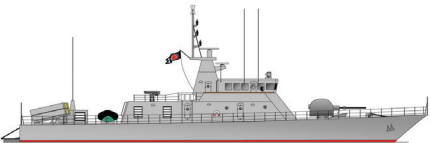
MBDA Contacts
 Sales and Business Development
 1 avenue Réaumur
 92358 Le Plessis-Robinson cedex - France
 Tel. + 33 (0) 1 71 54 10 00
 Fax + 33 (0) 1 71 54 00 01
 salesenquiries@mbda-systems.com
www.mbda-systems.com

Warhead & Fuze

- Semi-piercing HE warhead
- Impact and proximity fuze

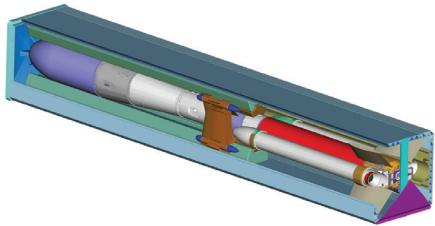
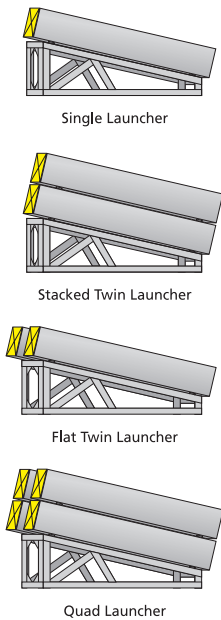
MARTE Mk2/N Launcher Configurations

Different, modular launcher configurations may be selected in line with available deck space thereby permitting installation on a wide range of naval platforms. A single launcher can easily be upgraded to a stacked twin whilst a flat twin launcher can be upgraded to a quad. In each case firepower is doubled even though the deck footprint is unchanged.



Fire Control System

The lightweight fire control system (combined weight, 21 kg) utilises the same helicopter-proven MMCU (MARTE Missile Control Unit) and MIU (Missile Interface Unit) units as MARTE Mk2/S. The MMCU can be linked to an onboard display on which all the mission planning functions can be performed.



MARTE Mk2/N Mission Planning

Name

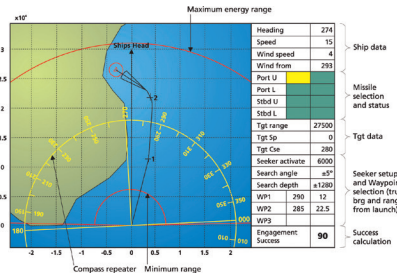
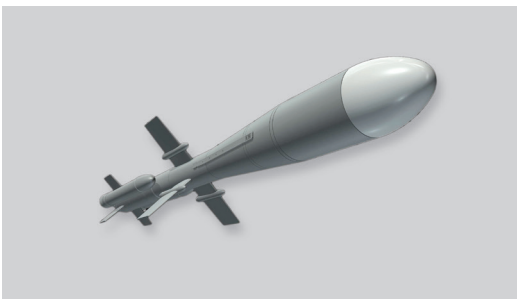
- MARTE MK2/N

Missile characteristics

- Weight: 310 kg
- Length: 3.85 m (canister 4 m)
- Max Body Diameter: 316 mm
- Range: In excess of 30 km

**Installation capability
 (includes below decks fire control)**

- 2 x single launchers: 1,500 kg
- 2 x twin launchers: 3,000 kg
- 2 x quad launchers: 5,400 kg



MFC console for Mission Planning of MARTE Mk2/N