

LAND

To provide adapted solutions for the command and control (C2) of Ground Based Air Defence systems, MBDA has developed the PCP (Platoon Command Post) offering high-standard performance and optimised flexibility to the GBAD commander.

This modular C2 system has been directly derived from the VL MICA system's Tactical Operations Centre which was developed in close cooperation with French Air Force military experts. Its functions have been extended to include the control of multi-layered configurations combining MISTRAL and VL MICA GBAD systems as well as their integration within wider air defence networks.

With PCP the structure and capabilities of a GBAD operational unit can be tailored in line with mission, terrain and air threat requirements. Depending on the tactical situation, the linking and coordination of up to eight V-SHORAD MISTRAL launchers or up to six SHORAD VL MICA launchers can be carried out. Alternatively, a combination of V-SHORAD and SHORAD systems can be also linked together, in this case comprising up to four missile launchers of each type (MISTRAL and VL MICA).

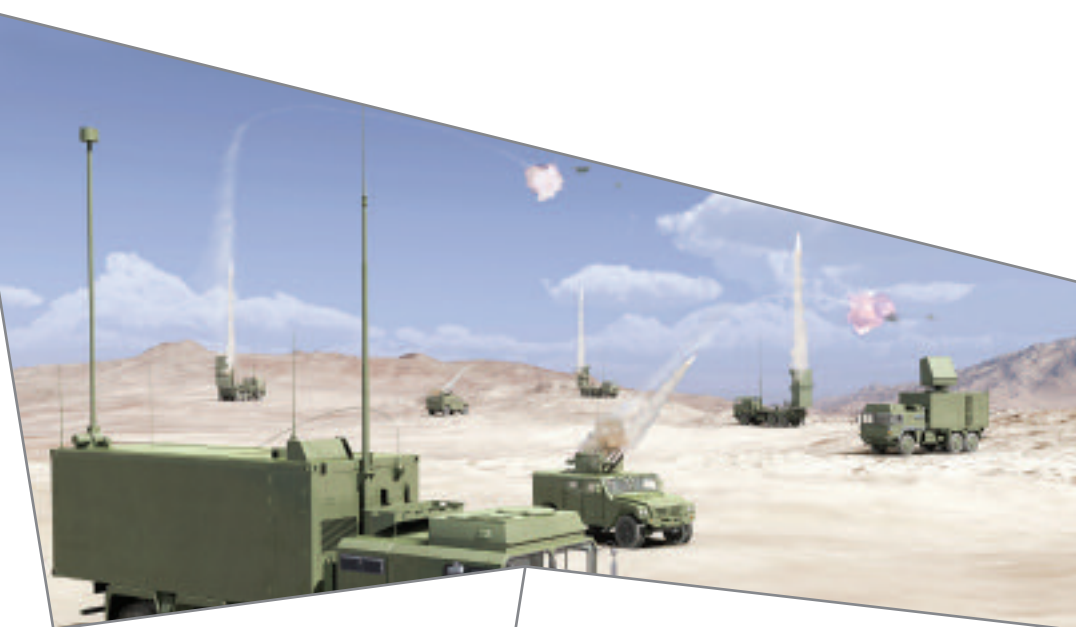
All the necessary functions associated with a state-of-the-art GBAD C2 system have been installed within the PCP. It not only carries out real-time functions ranging from the processing of the air picture to kill assessment but also non real-time functions such as data exchange with an upper level of command (Surface-to-Air C3I), auto-coordination with other PCPs deployed in the same area, the monitoring and/or remote control of sensor and launchers as well as mission planning, simulation and training.

To provide surveillance, detection and identification functions, the PCP can be linked to several tri-dimensional, track-while-scan radars. Depending on operational requirements, PCP can also be connected to compact and mobile sensors such as MBDA's IMCP (Improved Missile Control Post) or to longer range radars capable of providing an additional early warning capability at ranges exceeding 150 km.

- **Comprehensive C2 functions**
- **Multi-layered, adaptable air defence**
- **Flexibility of operations**

PLATOON COMMAND POST

DUAL-LAYER MODULAR C2 SYSTEM FOR GROUND BASED AIR DEFENCE



LAND

Hardware

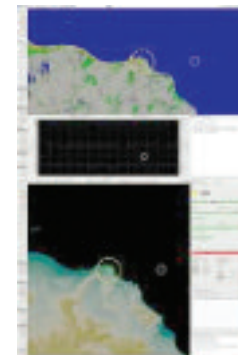
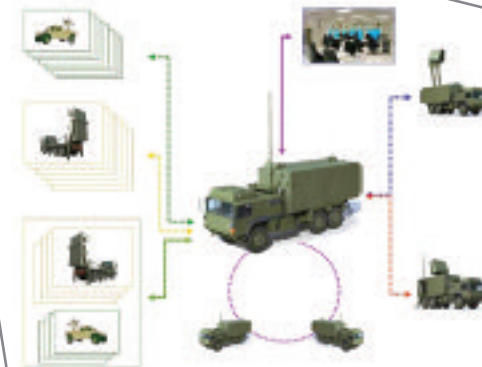
- 20 ft shelter, air-conditioned and NBC protected
- Autonomous power supply
- 3 x dual screen high-resolution display
- User-friendly Man-Machine Interface
- Standard 6x6 off-road vehicle

Capabilities

- Connexion with upper level command
- Auto-coordination with neighbouring PCPs (master / slaved systems)
- Remote control of radar(s)
- Surveillance and identification (multi-sensor data fusion)
- Processing of Local Air Picture, Threat evaluation and prioritisation
- Engagement policy, application of Rules of Engagement
- Target assignment
- Remote control of VL MICA launchers
- Up-link management for VL MICA missiles
- Cueing and control of Mistral launchers
- Kill assessment
- System monitoring
- Integrated simulation and training

Name

- PLATOON COMMAND POST



MBDA Contacts

Sales and Business Development
1 avenue Réaumur
92358 Le Plessis-Robinson cedex - France
Tel. + (0) 33 1 71 54 10 00
Fax + (0) 33 1 71 54 00 01
salesenquiries@mbda-systems.com

www.mbda-systems.com

MBDA
MISSILE SYSTEMS